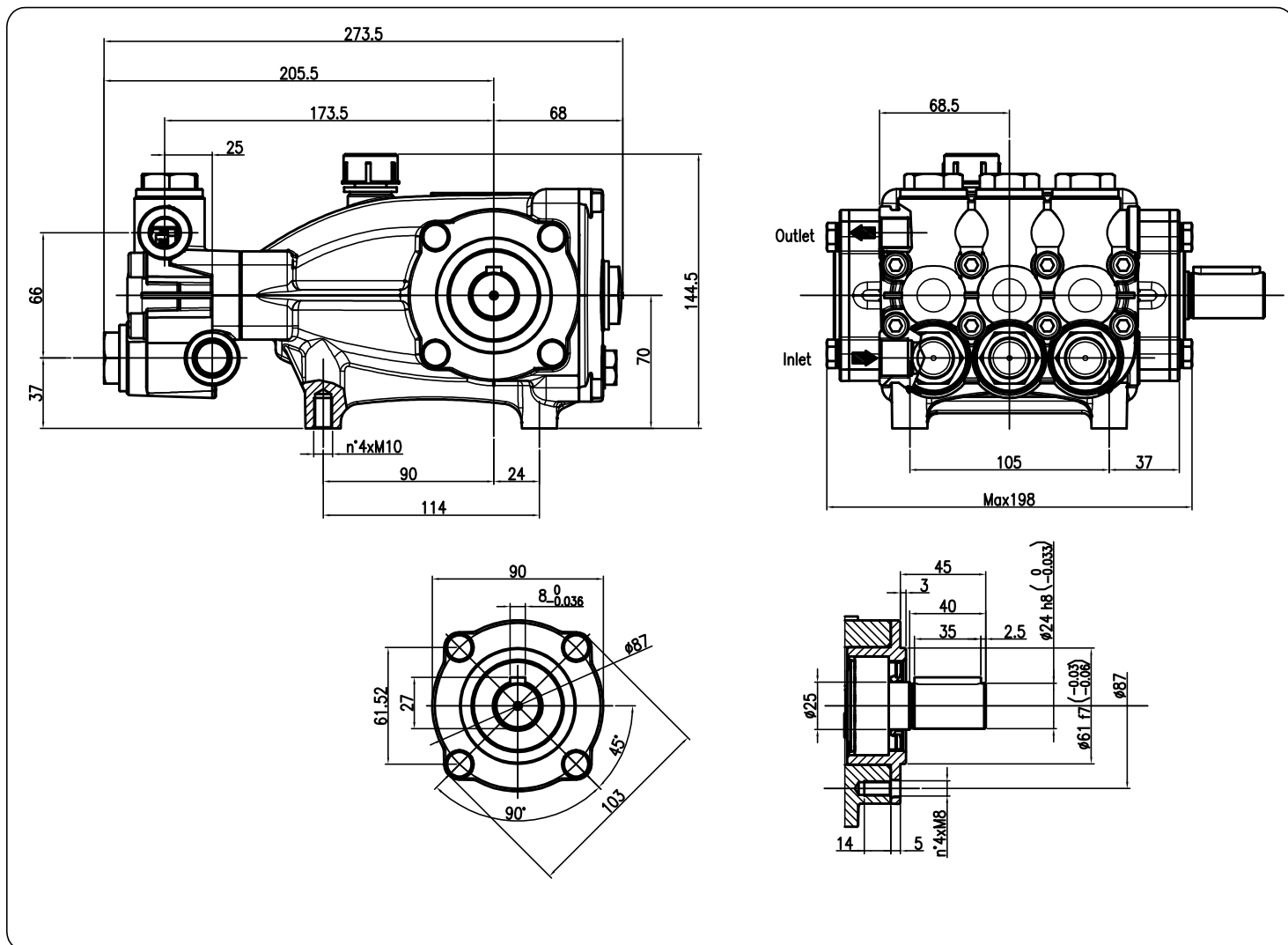


Pump Pompe Pumpen Pompa	Pressure Pression Druck Pressione		Volume Débit Leistung Portata		RPM tours/min u.p.m. giri/min	Required HP Puissance HP Leistung HP Potenza HP	Inlet port Entrée Eingang Aspirazione	Outlet Sortie Ausgang Mandata	Weight Kg Poids Kg Gewicht Kg Peso Kg	Max Water t Max t Eau Max Wasser t t Max Acqua
	bar	PSI	l/min	GPM						
NMT1220SHTR/L	150	2200	12.5	3.3	1000	4.8	G 1/2	G 3/8	9.5	85° C
			15.0	4.0	1200	5.8				
NMT1520SHTR/L	150	2200	15.0	4.0	1000	5.8	G 1/2	G 3/8	9.5	85° C
			18.0	4.7	1200	6.9				
NMT1220HTR/L	150	2200	12.5	3.3	1450	4.8	G 1/2	G 3/8	9.5	85° C
			15.0	4.0	1740	5.8				
NMT1520HTR/L	150	2200	15.0	4.0	1450	5.8	G 1/2	G 3/8	9.5	85° C
			18.0	4.7	1740	6.9				
NMT1820HTR/L	150	2200	18.0	4.8	1450	6.9	G 1/2	G 3/8	9.5	85° C
			21.4	5.6	1740	8.3				
NMT2120HTR/L	150	2200	21.0	5.5	1450	8.1	G 1/2	G 3/8	9.5	85° C
			25.0	6.6	1740	9.7				

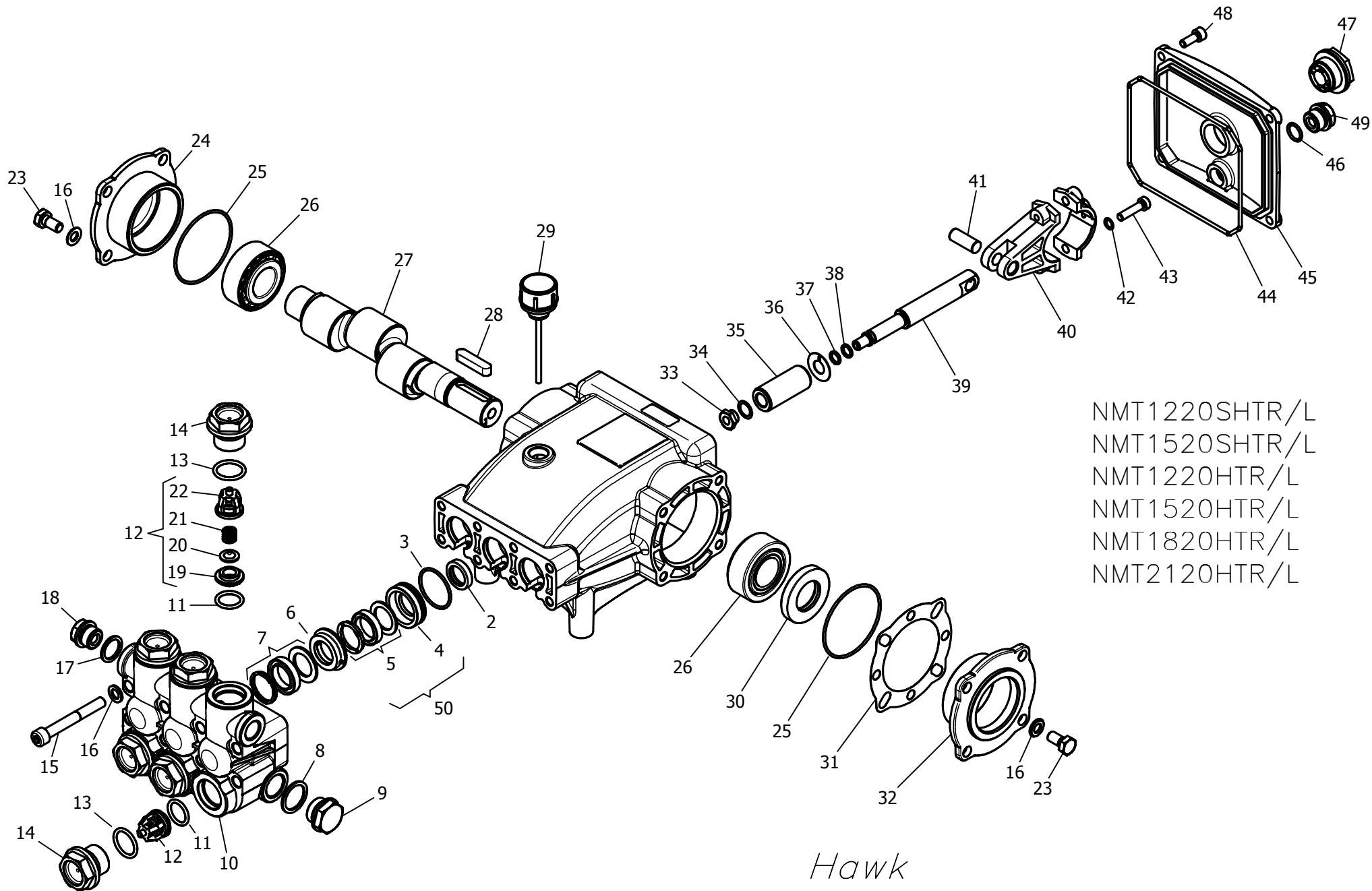
Dimensioni d' ingombro

Overall dimensions



Lubrificazione: Olio SAE 20/40W
Capacità 0.7 litri

Lubrication: SAE 20/40W Oil
Capacity 0.7 liters



NMT1220SHTR/L
 NMT1520SHTR/L
 NMT1220HTR/L
 NMT1520HTR/L
 NMT1820HTR/L
 NMT2120HTR/L

Hawk
Pompe NMT HT serie 2011
NMT HT pumps 2011 series

SPARE PARTS KIT

KIT RICAMBI

Posizioni Position	Part Number and Description	Codice e descrizione	Q.tà per ogni pompa Q.ty for each Pump	NMT1220SHTR/L	NMT1520SHTR/L	NMT1220HTR/L	NMT1520HTR/L	NMT1820HTR/L	NMT2120HTR/L
3- 7- 50	2601.21 Plunger Seals 20 mm	2601.21 Guarnizioni pistone Ø20	1						
3- 6- 7- 50	2601.22 Complete Seals Packing 20 mm	2601.22 Pacco completo Guarnizioni pistone	3						
33- 34- 35- 36- 37 38	2601.07 Plunger 20 mm	2601.07 Pistone Ø20	3						
11- 12- 13	2600.08 Complete Valve	2600.08 Valvola completa	6	◆	◆	◆	◆	◆	◆
2	2608.03 Plunger oil Seals	2608.03 Anelli tenuta olio Asta	1						
3- 6- 7- 8- 9 10- 11- 12- 13- 14 17- 18- 49	2600.21 Complete Manifold	2600.21 Testata Completa	1						
39- 40- 41- 42- 43	3100.13 Connecting Rod-Plunger Rod Assy	3100.13 Premontato Biella-Asta pistone	3						

PARTS LIST

LISTA RICAMBI

Pos. Item	Codice Part Number	Description	Descrizione	Q.tà per ogni pompa Q.ty for each Pump	NMT1220SHTR/L	NMT1520SHTR/L	NMT1220HTR/L	NMT1520HTR/L	NMT1820HTR/L	NMT2120HTR/L
1	0202.95	Crankcase	Carter	1						
*2	0001.03	Plunger oil seal	Anello radiale	3						
*3	0601.07	"O" Ring Ø1.78x31.47	"O" Ring Ø1.78x31.47	3						
*4	1201.68	Pressure ring 20mm	Pressore "U" Ø20	3						
*5	0002.71	Low pressure "U" seal, dia.20mm	Anello tenuta "U" Ø20	3						
*6	0300.60	Intermed. ring 20mm	Diffusore Interm. Ø20	3						
*7	0002.76	High pressure "U" seal, dia.20mm	Anello tenuta "U" Ø20	3						
*8	0603.07	Copper washer G1/2	Guarnizione rame	1						
*9	1601.71	Brass plug G1/2 nickel plated	Tappo G1/2 nichelato	1						
*10	1602.44	Manifold housing nickel plated	Testata nichelata	1						
*11	0605.07	"O" Ring Ø2.62x17.13	"O" Ring Ø2.62x17.13	6						
*12	3604.70	Valve assembly	Valvola premontata	6	◆	◆	◆	◆	◆	◆
*13	0601.65	"O" Ring Ø2.62x20.29	"O" Ring Ø2.62x20.29	6						
*14	1601.70	Valve plug nickel plated	Tappo valvola nichelato	6						
15	1801.03	Manifold stud bolt M8x65 Dacromet	Vite M8x65 Dacromet	8						
16	1400.01	Washer Ø8,5	Rosetta Ø8.5	16						
*17	0603.06	Copper washer G3/8	Guarnizione rame	1						
*18	1601.72	Brass plug G3/8 nickel plated	Tappo G3/8 nichelato	1						
19	1503.18	Valve seat	Sede valvola	6						
20	1202.00	Valve plate	Piattello valvola	6						
21	0900.30	Valve spring	Molla valvola	6						
22	0604.05	Valve cage	Gabbia valvola	6						

PARTS LIST

LISTA RICAMBI

NMT HT 2011

Pos. Item	Codice Part Number	Description	Descrizione	Q.tà per ogni pompa Q.ty for each Pump	NMT1220SHTR/L	NMT1520SHTR/L	NMT1220HTR/L	NMT1520HTR/L	NMT1820HTR/L	NMT2120HTR/L
23	1802.03	Hexagonal screw M8x18	Vite M8x18	8						
24	0500.61	Closed bearing housing	Flangia chiusa	1	◆	◆	◆	◆	◆	◆
25	0601.63	"O" Ring Ø1.78x60.05	"O" Ring Ø1.78x60.05	2						
26	0200.06	Roller bearing 33205	Cuscinetto a rulli 33205	2						
27	0006.17	Single - ended shaft	Albero semplice P.d.F.	1	◆				◆	
	0006.19	Single - ended shaft	" " "	1		◆				
	0006.14	Single - ended shaft	" " "	1			◆			
	0006.16	Single - ended shaft	" " "	1				◆		
	0006.18	Single - ended shaft	" " "	1						◆
28	0206.04	Crankshaft key	Chiavetta	1						
29	1600.06	Oil dip stick	Tappo livello olio	1						
30	0001.02	Crankshaft seal	Anello radiale	1						
31	0301.02	Shim	Distanziale	1						
32	0500.60	Bearing housing	Flangia	1						
*33	0302.19	Plunger nut	Dado pistone	3						
*34	1400.12	Copper spacer Ø 11.2/15x0.5	Rosetta rame Ø 11.2/15x0.5	3						
*35	1200.10	Plunger 20mm	Pistone Ø20	3						
*36	1400.15	Copper spacer Ø 11.3/24x0.5	Rosetta rame Ø 11.3/24x0.5	3						
*37	0601.03	"O" Ring Ø1.78x7.66	"O" Ring Ø1.78x7.66	3						
*38	0009.04	Teflon ring	Anello antiestrusione	3						
*39	0003.28	Plunger rod	Asta pistone	3	◆	◆	◆	◆	◆	◆
*40	0100.01	Connecting rod	Biella	3						
*41	1502.06	Connecting rod pin	Spinotto	3						
*42	1401.02	Spring washer Ø6	Rosetta elastica Ø6	6						
*43	1801.05	Connecting rod screw M6x25	Vite M6x25	6						
44	0601.88	"O" Ring Ø 2.62x126.67	"O" Ring Ø 2.62x126.67	1						
45	0203.59	Crankcase cover	Coperchio posteriore	1						
46	0601.14	"O" Ring Ø1.78x14	"O" Ring Ø1.78x14	1						
47	0700.05	Sight glass, G3/4	Spia livello olio G3/4	1						
48	1801.12	Screw M6x16	Vite M6x16	4						
49	1601.17	Brass plug G3/8	Tappo G3/8	1						
50	3604.79	Premontato tenute bassa pressione	Low pressure seal assembly	3						

Part available
in kit only

**Particolare disponibile
solo in kit**

* Part available
in kit also

**Particolare disponibile
anche in kit**

rev. 1.0